






## SCHEMA DI MONTAGGIO - ASSEMBLY SCHEDULE

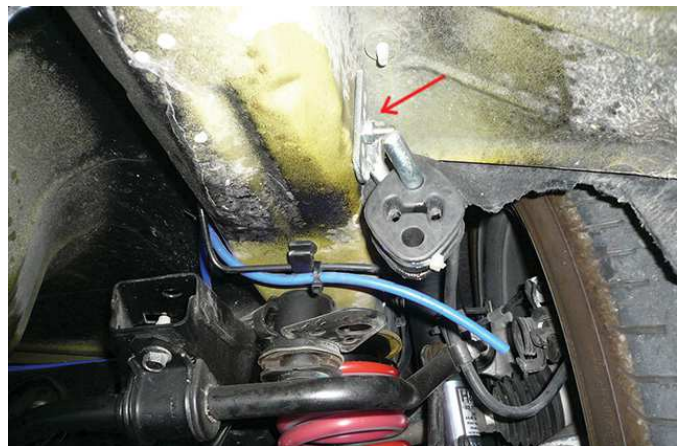
COD. **58.0740. / 58.0741. / 58.0744. / 58.0745.**

REV. **00** DEL. **12/07/2016** TEC-LOG **G.D.**

Descrizione **Ford Mustang VI**

**Fig. 1**

-  Fissare la staffa in dotazione al montante della vettura ed agganciare lo scarico utilizzando il gommino!
-  Fix the brackets in equipment on the platform of the car and hook the exhaust by using the gum-ring;
-  Fixer l'étrier en dotation sous la coque de la voiture et en utilisant le petit bouchon en caoutchouc accrocher l'échappement!
-  Fijar el estribo en dotación al cuerpo del coche y enganchar el escape utilizando el anillo de goma!
-  Fixieren Sie die Schelle des Montagekits unter dem Karosseriekörper und setzen Sie die Anlage mit Hilfe des Gummirings ein!



**Fig. 2**



**Fig. 3**





**HIGH PERFORMANCE  
STAINLESS STEEL EXHAUSTS**

**Fig. 4**



**Fig. 5**

**Fig. 6**

**Fig. 7**